

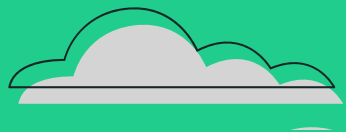
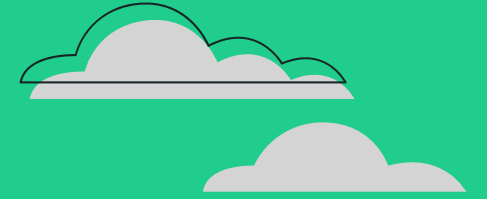


Revolutionizing Exhibition with



WHAT'S INSIDE

This white-paper explores the multifaceted benefits of adopting beMatrix modular solutions, emphasising cost efficiency, resource efficiency, sustainability, European design aesthetics, and the unparalleled ease of assembly and dismantling.





The beMatrix Modular System Advantage



In the dynamic world of exhibitions, standing out is not just an option—it's a necessity. XS Worldwide, in partnership with beMatrix, introduces a modular system that redefines the essence of custom exhibition stands.

Anurag Madaan

CEO, XS-Worldwide



Cost Efficiency: Maximizing Your Exhibition Budget

With reusability at its core, beMatrix not only reduces initial investment costs but also diminishes ongoing expenses related to storage, transportation, and maintenance, ensuring a higher return on investment for every exhibit.



Resource Efficiency: Streamlining the Exhibition Process

Designed for quick assembly and dismantling, beMatrix stands require significantly fewer labor hours and materials, cutting down the time to market by over 50% compared to conventional builds. This efficiency translates into more time focusing on what truly matters—your brand's presentation and visitor engagement.



Embracing Green Exhibiting: Sustainability and Eco-Consciousness

beMatrix elevates environmental stewardship through the strategic use of recyclable materials and waste-reducing designs, showcasing a deep commitment to sustainability. This approach not only reflects an eco-conscious ethos but also sets a benchmark for responsible exhibition practices



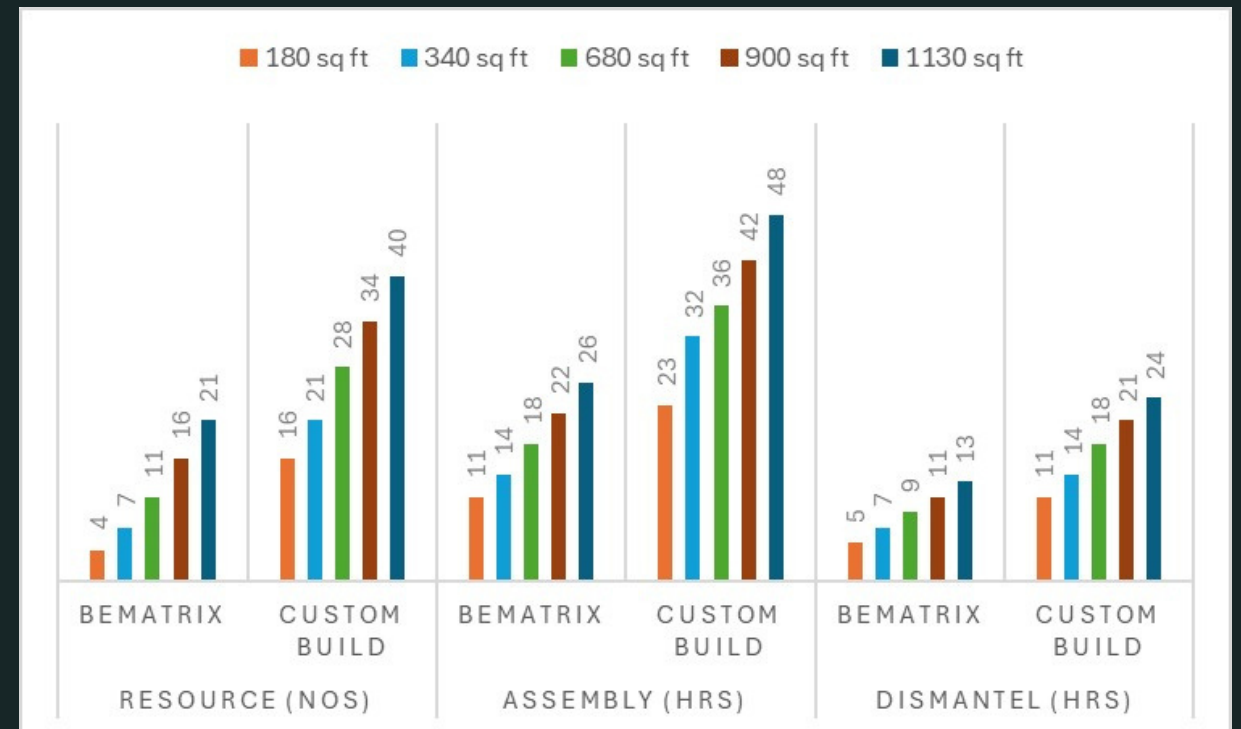
European Design Aesthetics: Crafting Visually Stunning Spaces

Explore the elegance and sophistication of beMatrix's European design aesthetics. With sleek lines, customizable finishes, and seamless integration of multimedia elements, beMatrix stands offer a premium look and feel that elevates your brand's visibility and allure on the show floor.



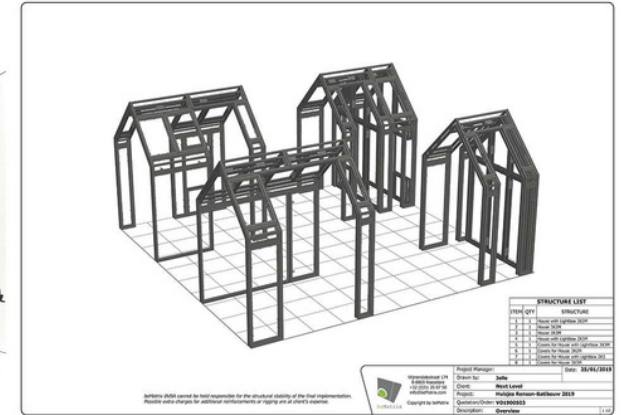
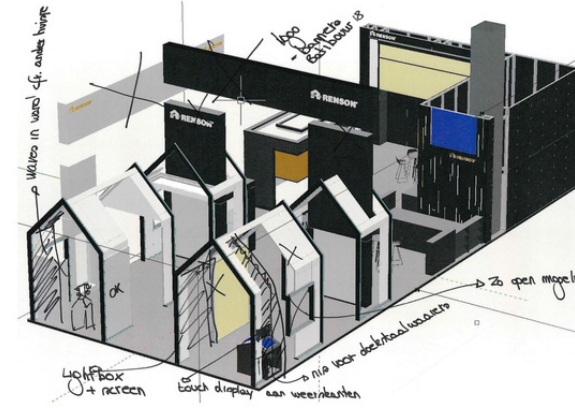
Simplifying Exhibitions: Ease of Assembly and Dismantling

The beMatrix system revolutionizes exhibit setup with its intuitive, toolless assembly and dismantling process. Boasting a rapid, one-hand connector and environmentally friendly ECO pins, beMatrix ensures a seamless, efficient build experience, significantly reducing labor and time, all while prioritizing sustainability and design integrity.



The beMatrix Advantage

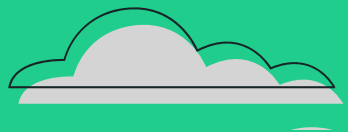
The beMatrix system revolutionizes exhibit setup with its intuitive, toolless assembly and dismantling process. Boasting a rapid, one-hand connector and environmentally friendly ECO pins, beMatrix ensures a seamless, efficient build experience, significantly reducing labor and time, all while prioritizing sustainability and design integrity.



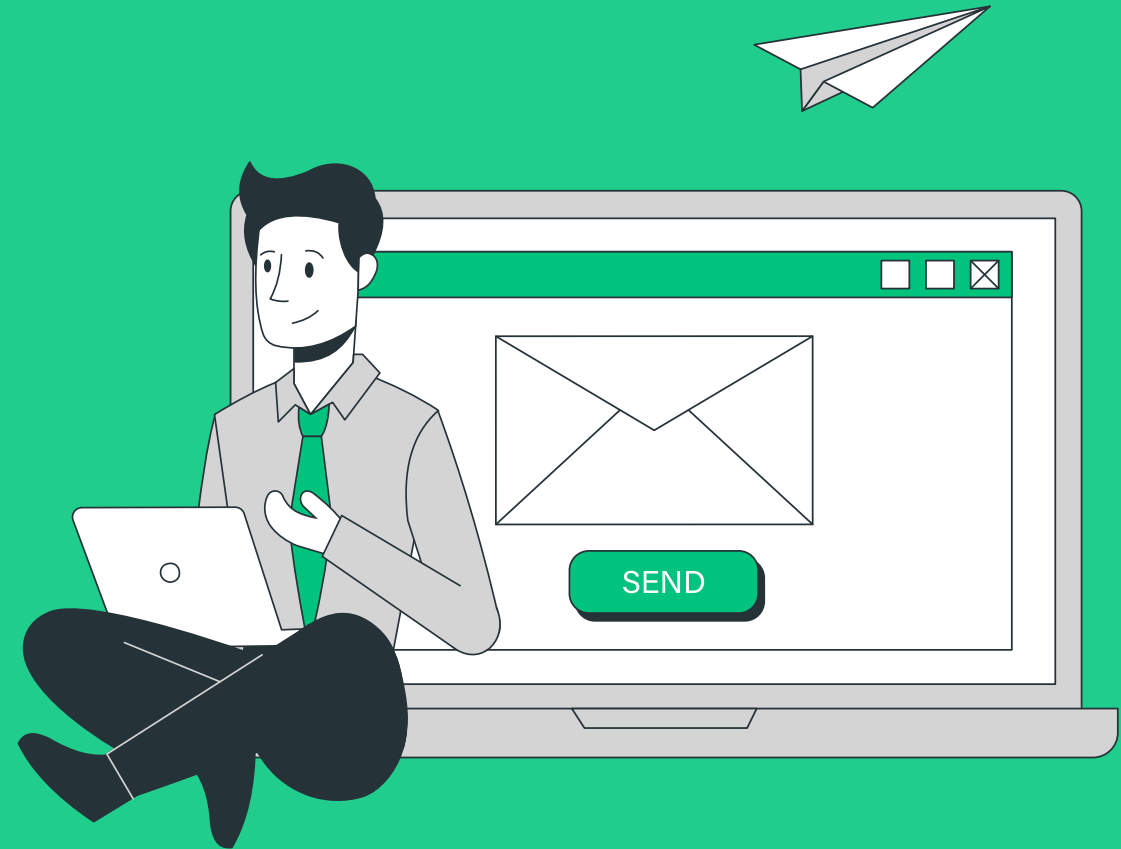
Conclusion



Embracing the beMatrix modular system is more than an operational decision; it's a strategic move towards cost-effective, sustainable, and visually captivating exhibition spaces. With XS Worldwide and beMatrix, step into a new era of exhibitions where efficiency, design, and sustainability converge to create unmatched brand experiences.



Thank You



www.xs-worldwide.com | info@xs-worldwide.com

